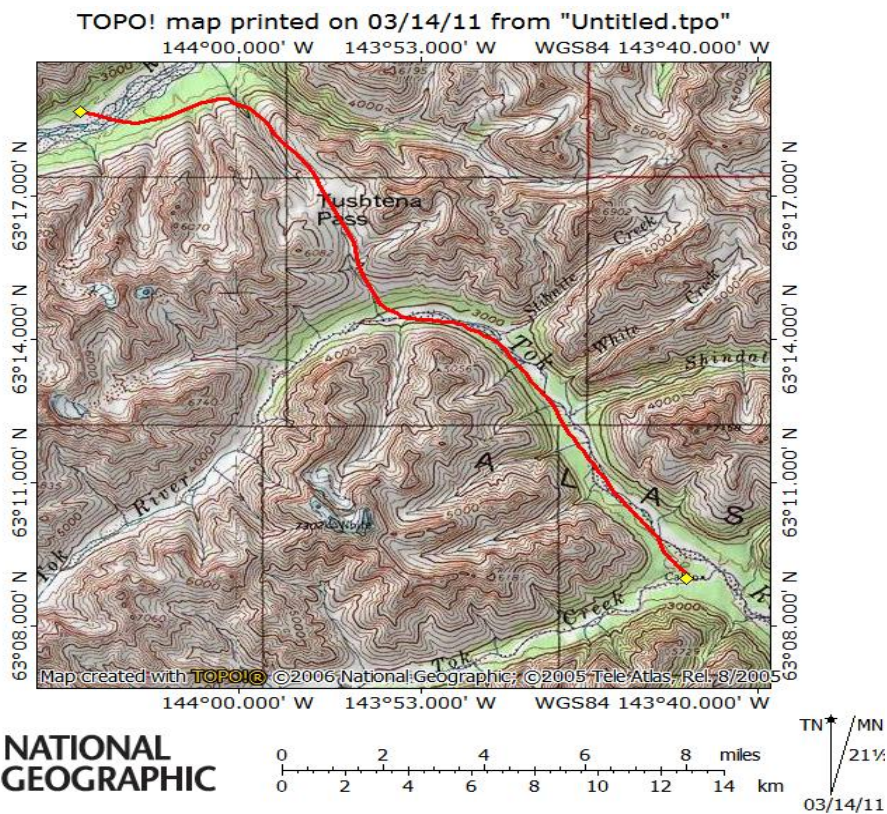
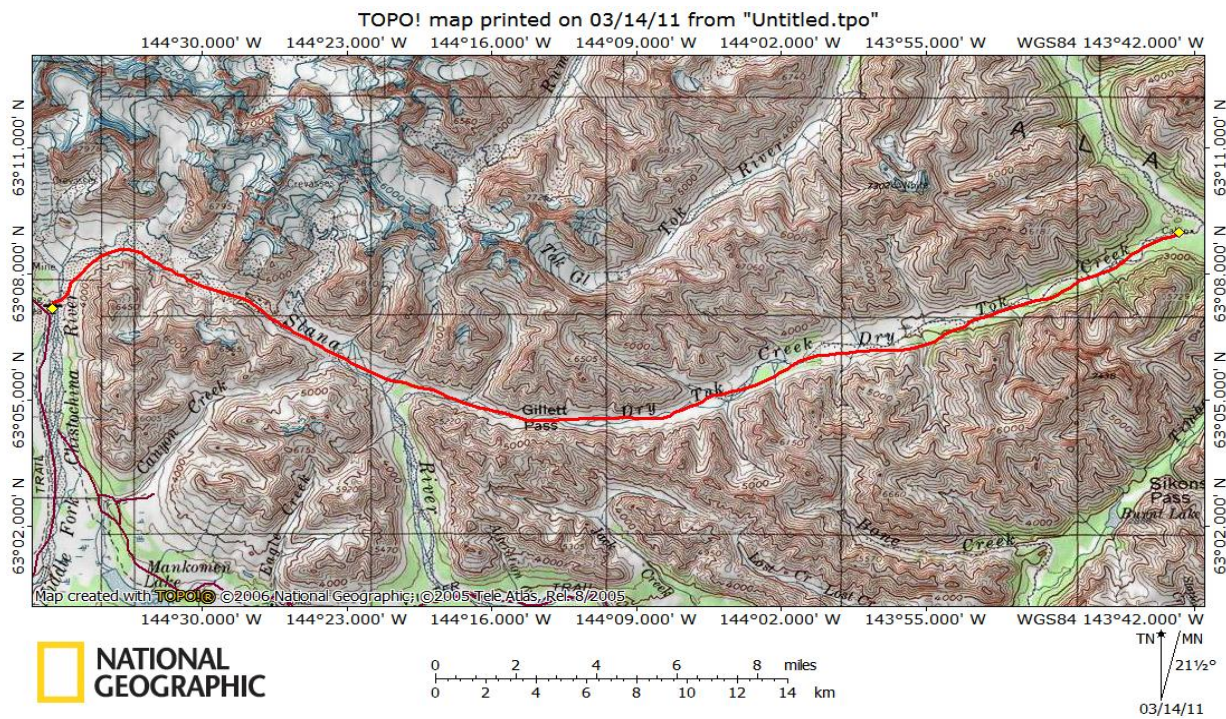


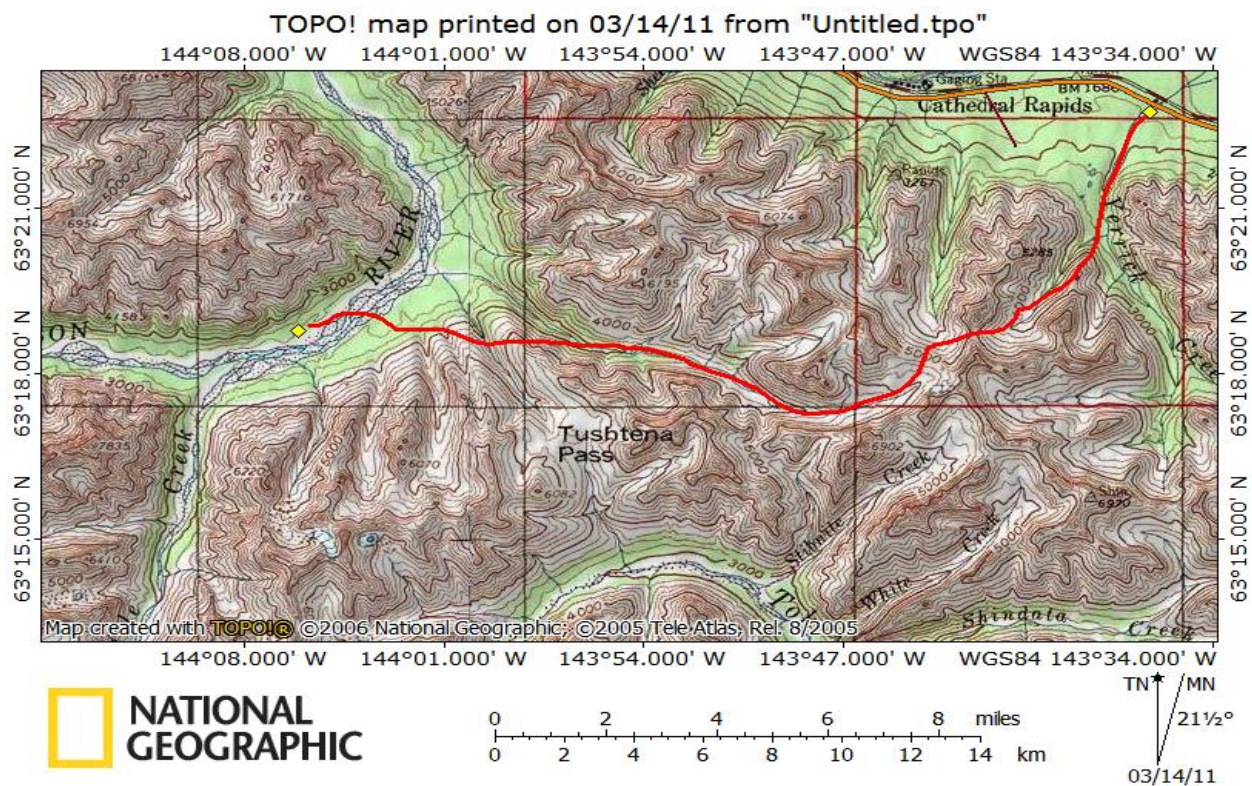
Robertson River to Dry Tok Creek



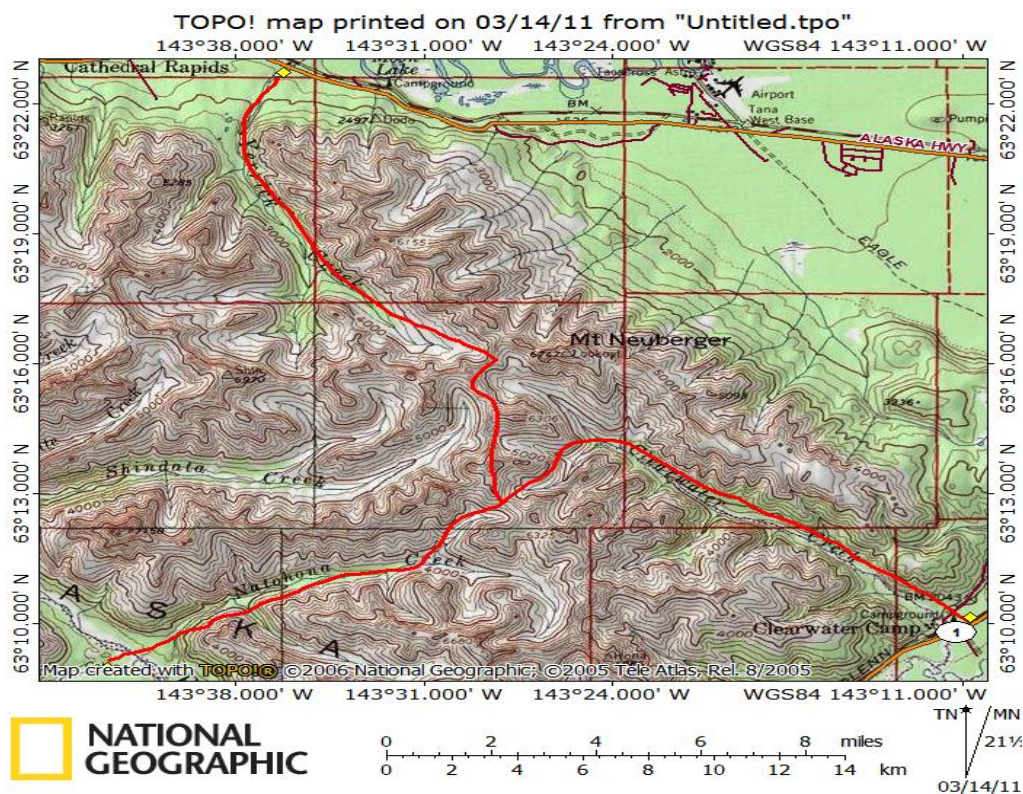
Trout Lake to Dry Tok Creek



Robertson River To AK Highway



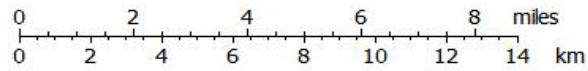
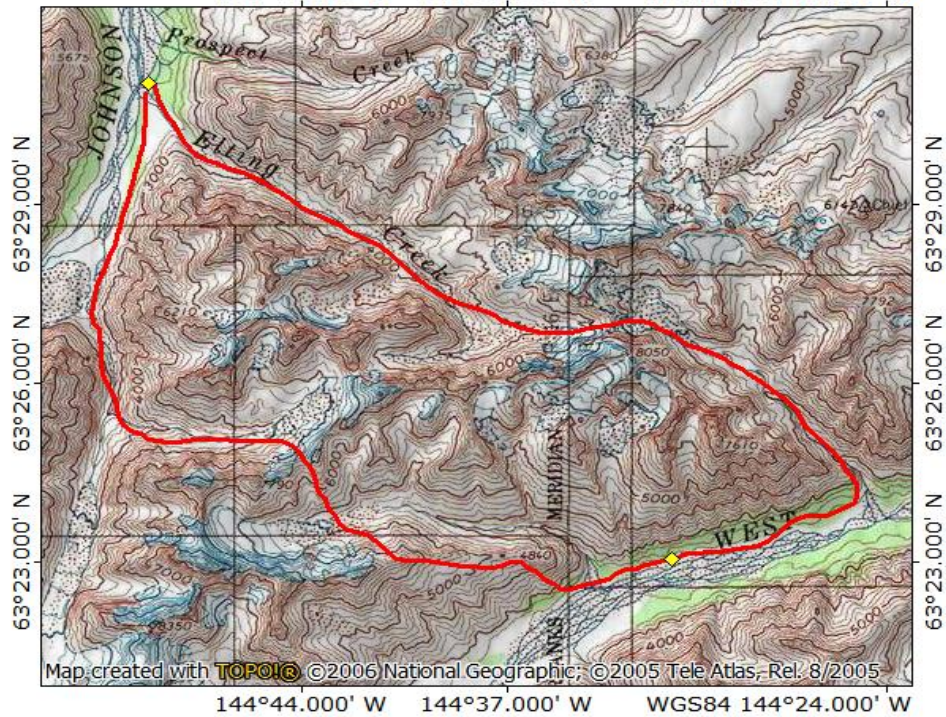
Dry Tok Creek to Highway



Johnson River to Robertson River

TOPO! map printed on 03/14/11 from "Untitled.tpo"

144°44.000' W 144°37.000' W WGS84 144°24.000' W



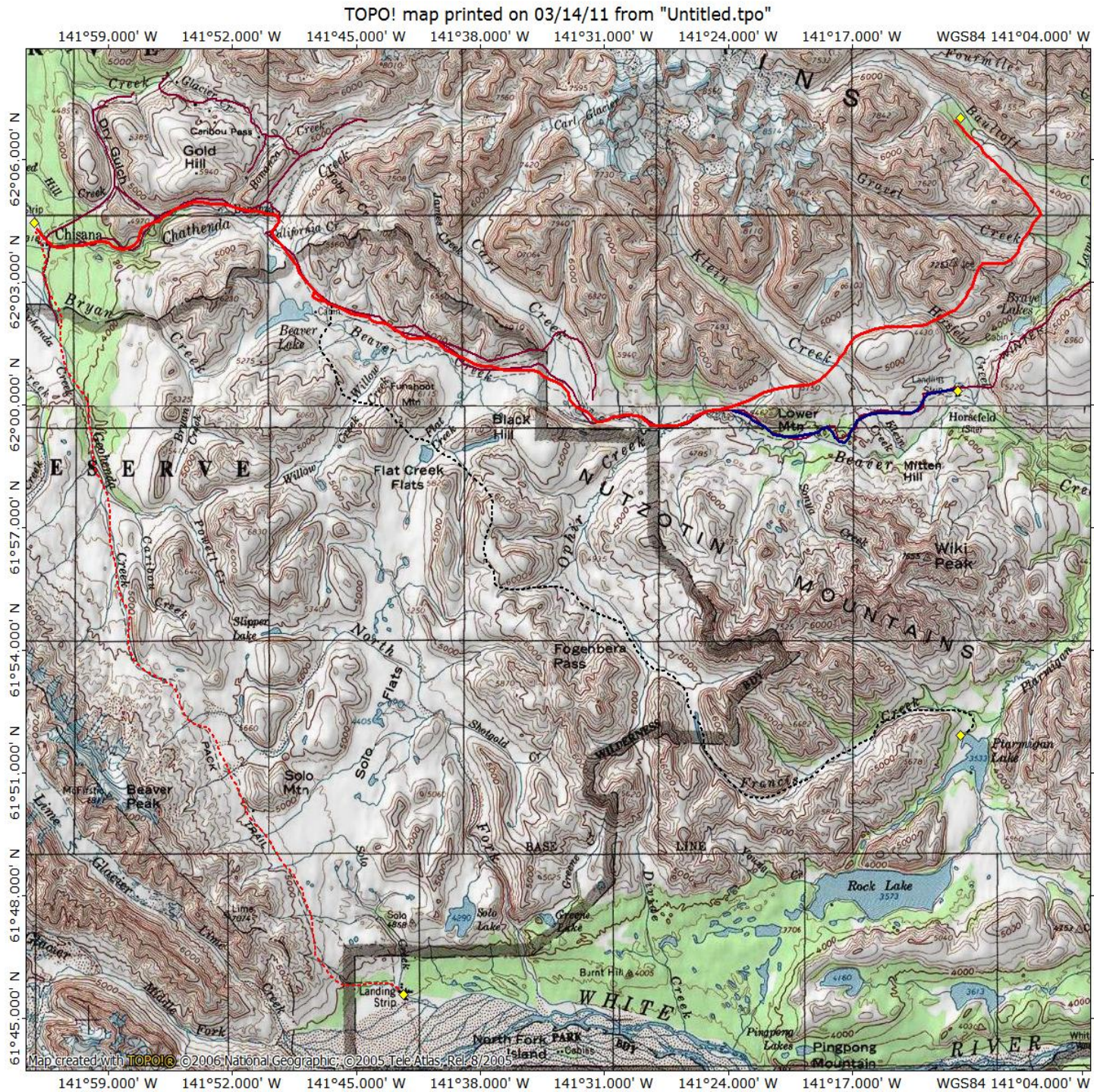
TN* / MN
21 1/2
03/14/11

Baultoff To Chisana = **Solid RED,**

Horsfeld To Chisana = **Solid BLUE to Solid RED Line,**

Ptarmagin To Chisana = **Dashed BLACK to Solid RED Line**

Solo To Chisana = **Dashed RED Line.**



0 2 4 6 8 miles
0 2 4 6 8 10 12 14 km

TN ↑ MN
21½
03/14/11

Nabesna To Chisana

TOPO! map printed on 03/14/11 from "Untitled.tpo"

